



**Verniciatura Industriale Pesarese**

Coating Services - Solutions against time

*RISKS IDENTIFICATION AND CONTROL*

***SAFETY INDUCTION***

[www.vippesaro.com](http://www.vippesaro.com)





# Risks assessment

**VIP's guests shall be well-informed on current risks during their stay in our company.**

**This guide has the purpose to help our visitors, as well as workers, identifying hazards and the related risks in order to eliminate or reduce them to an acceptable level.**

Based on risks assessment according to D.Lgs.

81/08 and achieved for this production unit,  
we recommend you to comply with the following instructions  
to help safeguard your and our safety during your  
permanence in our company.

Thanks for your collaboration.





# Hazard categories



## Collision

Collision by accident with moving equipments, suspended loads or stored materials.



## No smoking

Explosion due to flammable materials, for this reason smoking is forbidden.



## Safety walkway

Walking outside the green pathway may cause collision by accident with equipments as well as materials, slipping and tripping.



## Airway injuries

Inhalation of chemical products as flying powders dispersed during the application or solvent dispersion.



## Eye injuries

Wear eyes protection if exposed to artificial optical radiations or flying materials derived from processes.



## Noise

Ear plugs must be worn to cope with noise hazard due to working machineries.



## Burn

Hot surfaces may cause burn if touched.

# Potential risks

Inside the factory there may be these sources of risk:



**Circulation of  
working  
vehicles**



**Slippery  
surfaces**



**Suspended  
loads**



**Fire**



**Electrocution**



**Noise**



**Hot surfaces**



**Particles  
projection**





# Safe walkway

Pedestrians must walk on the green footpath in order not to collide with moving equipments, and avoid slipping and tripping. Please have a look at the attached map and wear required PPE equipments for a safety visit of our factory, you will find the escape routes and the colored walkway to reach all factory's areas securely.







# External safety walkaway

Beware of moving equipments on the yard, follow the green footpath on the pavement in order to prevent collisions. Pay attention to working forklifts, cranes and during loading/unloading processes.







# Forklifts collision

Operator inattention is the most common cause of forklift accidents and it's completely preventable. While operator inattention can be caused by fatigue, distractions or simply carelessness, it's imperative that operators stay alert. For your safety we highly recommend to follow the green pathway.







# Batteries charging station

Forklift batteries contain hydrogen, keep away from heat, sparks, open flame or other sources of ignition for this reason smoking is forbidden in proximity of the charging station.







# Chemical products storage

Paints are stored in these containers, as those materials are highly flammable keep away from heat, sparks, open flame or other sources of ignition for this reason smoking is forbidden inside or in proximity of the paints locker and outside the designated area.







# Tanks containing naphtha

Tanks containing naphtha are highly flammable keep away from heat, sparks, open flame or other sources of ignition for this reason smoking is forbidden in proximity of this area.







# AOR - Artificial optical radiations

Under the external marquee, is mandatory to use goggles when closed to the welding station, beware of artificial optical radiation. Have a look at the PPE guidance attached at the end of this guide.





# LPG storage

Full and empty LPG cylinders are stored in this area, keep away from heat, sparks, open flame or other sources of ignition for this reason smoking is forbidden in proximity of the stock.

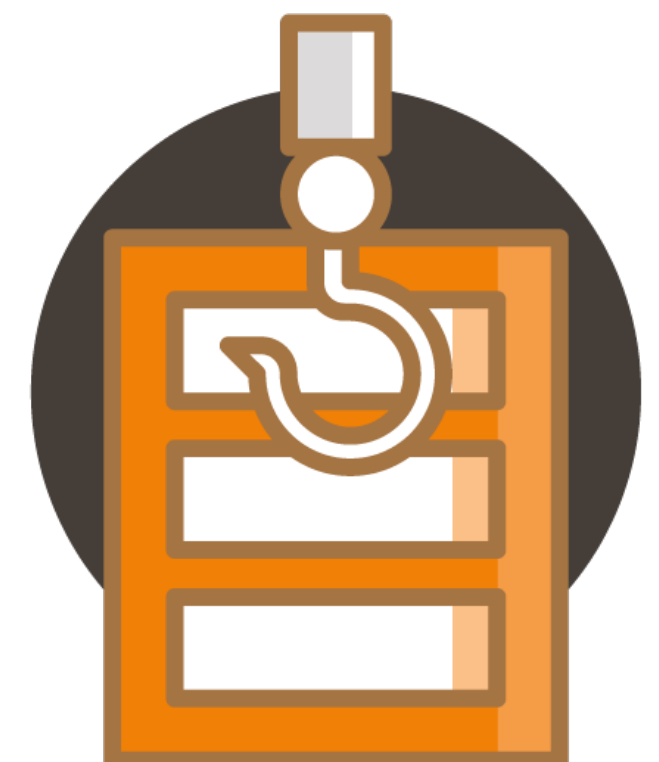






# Suspended loads

Beware of suspended loads, please wear the safety helmet during inspections and visits in the working areas.







# Burn hazard

Beware of heat produced by the ovens and the risk of coming into contact with hot surfaces of pre-heated pieces in order to prevent accidental burn.

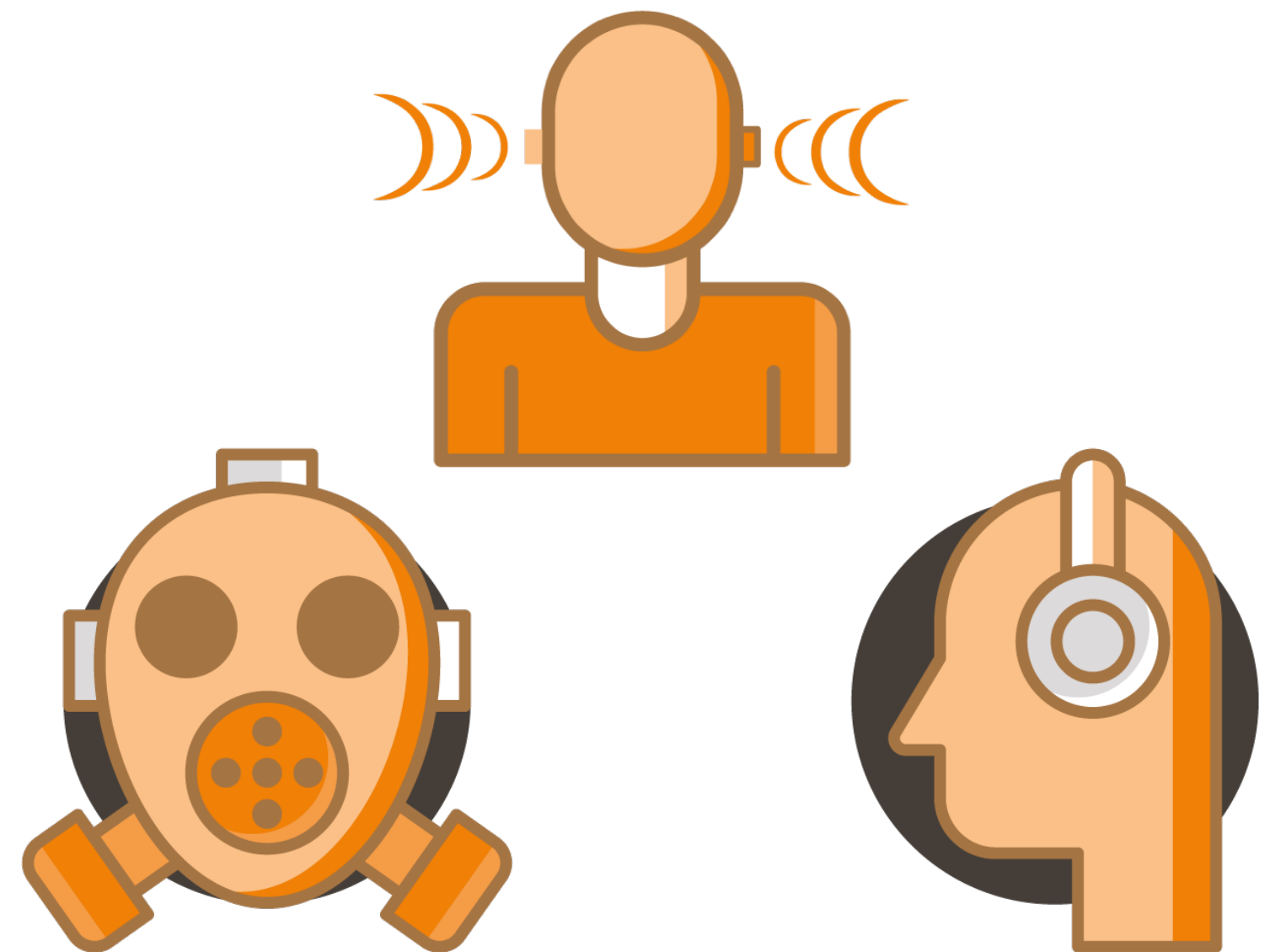






# □□□ Sandblasting chamber

Closed to the sandblasting chamber please wear the necessary personal protective equipments, in this area the noise reaches more than 85dB(A).







# First aid kit

First Aid Kit is available inside the Quality Control Office, at the beginning of the green pathway.







# Hazards related to coating processes:



**Verniciatura Industriale Pesarese**  
Coating Services - Solutions against time





# Powder coatings

- Powder dispersion
- Risk of coming in contact with hot surfaces or flame equipments and chemical agents
- Atex risk and fire hazard
- Noise due to working machineries
- Risk of products and equipments overturning
- Collision with working machineries
- Equipments damage





# Sandblasting

- Powder dispersion
- Excoriation, eye injuries, wounds
- Noise due to working machineries
- Risk of products and equipments overturning
- Collision with working machineries
- Equipments damage





# Metallisation

- Powder dispersion
- Risk of coming into contact with hot surfaces or flame equipments and chemical agents
- Atex risk and fire hazard
- Noise due to working machineries
- Risk of products and equipments overturning
- Collision with working machineries
- Equipments damage





# Liquid coatings

- Risk of coming into contact with hot surfaces or flame equipment
- The use of chemical agents may cause skin and airway irritation, eyes injuries
- Atex risk and fire hazard due to highly flammable materials
- Noise due to working machineries
- Risk of products and equipments overturning
- Collision with working machineries
- Equipments damage
- Solvent dispersion for solvent based-coatings

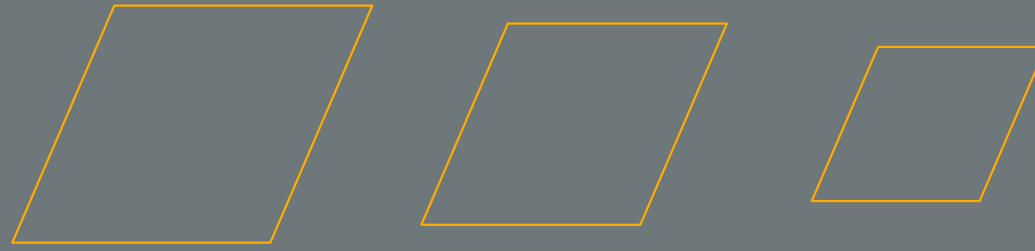




# Foaming processes

- The use of chemical agents may cause skin and airway irritation, eyes injuries
- Atex risk and fire hazard
- Noise due to working machineries
- Risk of products and equipments overturning
- Collision with working machineries
- Equipments damage





# Evacuation plan

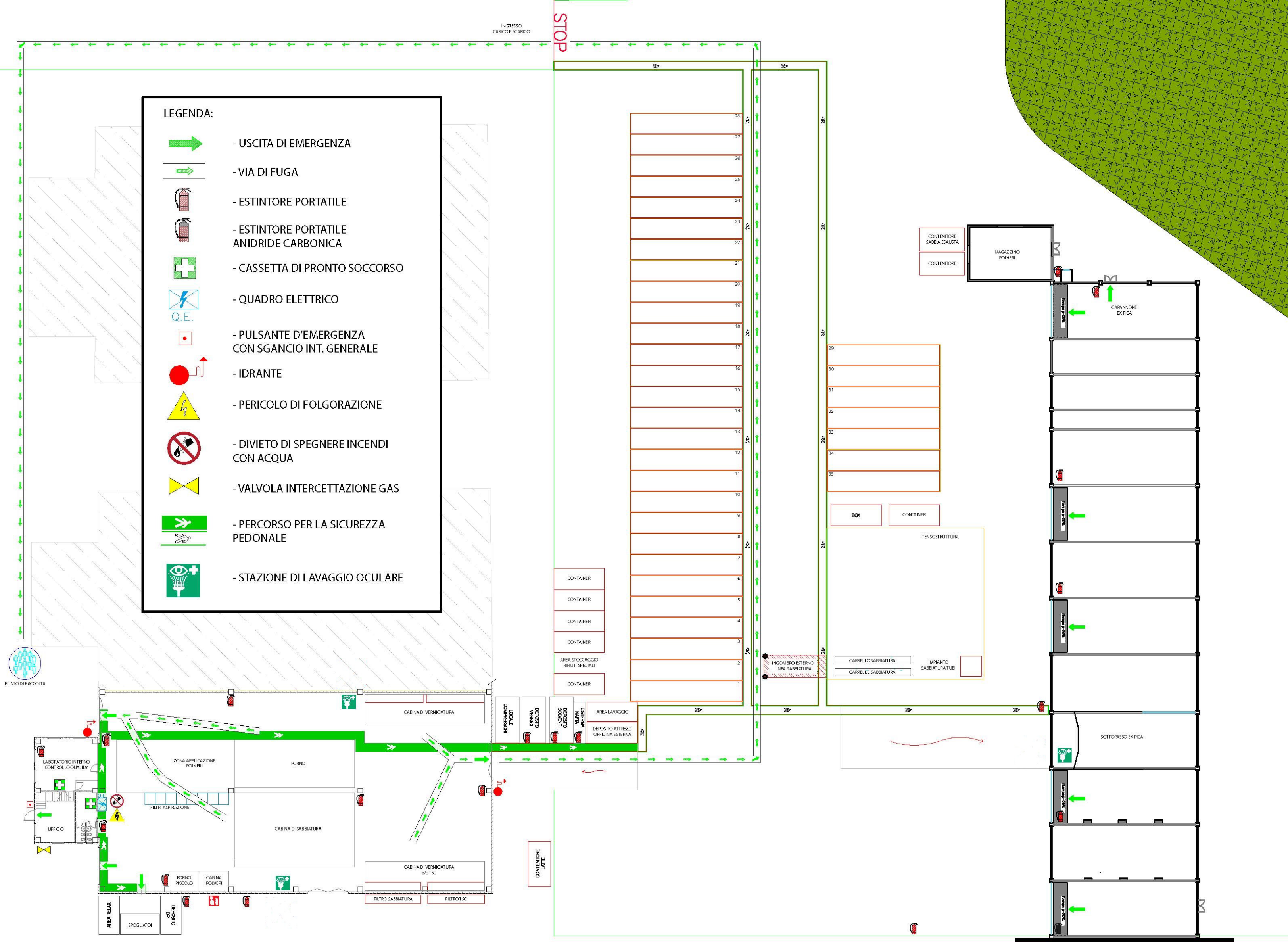
In case of emergency you will hear the evacuation signal, please follow the instructions of our designated team to easily find the nearest emergency exit.

Please have a look at the map to find the escape routes and the assembly point, here our team will give you further instructions.

You can not return to your workstation till the end of alert, only after hearing the all-clear signal.









# Visitors - Personal Protective Equipments

**PPE, *Personal Protective Equipments***, protect the guests against health or safety risks at work. It can include items such as safety helmets, gloves, eye protection, high-visibility clothing, safety footwear and harnesses, respiratory protective equipment (RPE).

Making the workplace safe includes providing instructions, procedures, training and supervision to encourage people to work safely and responsibly.

Even where controls and safe systems of work have been applied, some hazards might remain, for this reason we kindly ask you to always pay attention.

In these cases **PPE** are needed to reduce the risk. Some equipments' examples to prevent possible accidental injuries:



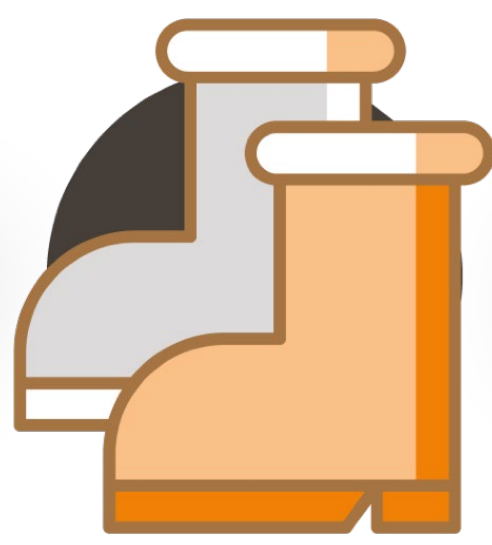
## Eye protection

from flying particles or  
splashes of chemical  
agents



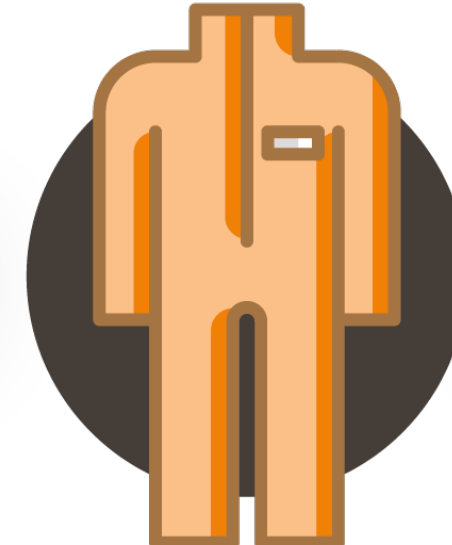
## Protective helmet

from falling materials,  
suspended loads,  
slipping and tripping



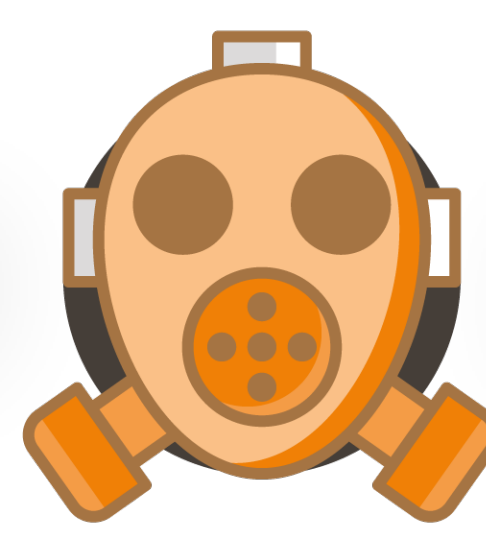
## Safety shoes

from falling materials,  
suspended loads,  
slipping and tripping



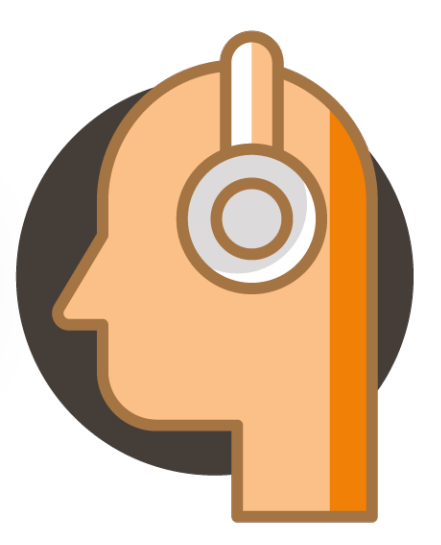
## High-visibility safety jacket

from extremes of heat or  
cold, accidental collision,  
contact with chemical agents



## Airways protections

from breathing in  
contaminated air



## Ear Plugs

from noise related to  
working machineries that  
may cause hypoacusis





# Useful numbers

112

Firefighters  
First AID   Police







# Contacts



**Verniciatura Industriale Pesarese**

Coating Services - Solutions against time



[info@vippesaro.com](mailto:info@vippesaro.com)



+39 0721202882

Via del Vallo 46



Pesaro, PU 61122 Italy







**Thanks for your kind attention**

[www.vippesaro.com](http://www.vippesaro.com)