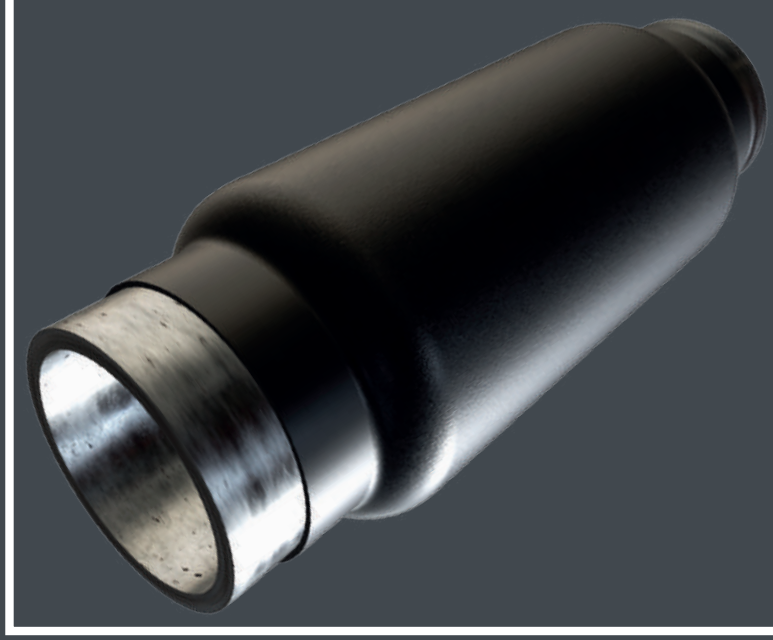




Verniciatura Industriale Pesarese
Coating Services
Solutions against time



FSPE FLAME SPRAY POLYETHYLENE

Flame Spray Polyethylene (FSPE) technologies are particularly useful with custom pieces, bends, buckle arrestors etc., items whose shapes are difficult to coat. Powder is carried in a stream of air and is fed into the center of an annular combustion flame where it is heated. A second outer annular nozzle feeds a stream of air, around the powder stream, which accelerates the spray particles toward the substrate and prevents burning of the powder.

Long-lasting corrosion protection



The FBE primer offers an excellent adhesion to the substrate and provides a **long-term corrosion protection** for pipelines. It also ensures the resistance to the cathodic disbondment so the total cost of cathodic protection of the pipeline decreases.

Remarkable mechanical protection



The layer of applied polypropylene protects the pipeline during transport and installation, thus reducing repair costs and guarantees underground protection against mechanical, chemical and abrasive. The thicker the applied polypropylene the higher the obtained mechanical protection.

Advantages of the sintered system



V.I.P. using this special application technique is able to coat also specific pieces with special shapes (bends, tees, reducers, joints, etc.). There aren't any limitations about the amount of pieces to coat, even the single piece can be treated. PE can be applied in different thicknesses to meet the requirements of the project specifications.

Application

External coating

Applicability - **Limitless amount**

- BUCKLE ARRESTORS
- STANDARD FITTINGS
- SMALL AND LARGE PIPES
- FLANGES
- BENDS
- FIELD JOINTS
- CUSTOM PIECES

Inspection & Testing

In our internal laboratory, we perform all the tests and inspections during all the project's phases, carried out with NACE certified staff.

Coating typical properties

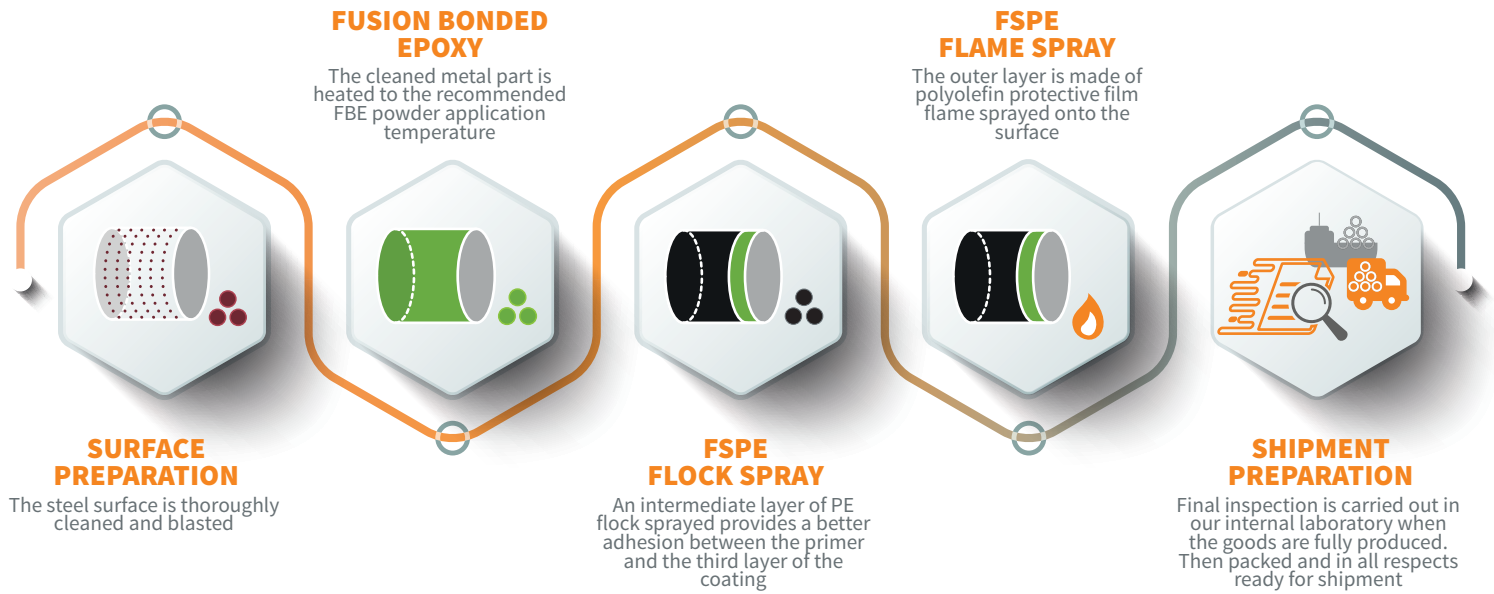
- Elongation at Break:** > 600%
- Hardness:** Shore D 50
- Minimum recommended temperature:** - 40°C
- Maximum recommended temperature:** + 80°C

Coating capacity

- PIPES**
- Diameter** from 1/2" to 120"
- Maximum unit **length** 13,5 meters
- Maximum unit **weight** 15,000 kg
- JOINTS AND/OR CUSTOM PIECES**
(Bends, tees, reducers, flanges, etc.)
- Maximum **size** 3.0 x 3.0 x 13.5 meters
- Maximum **unit weight** 15,000 kg
- Maximum **thickness** of the coating 3,5 mm



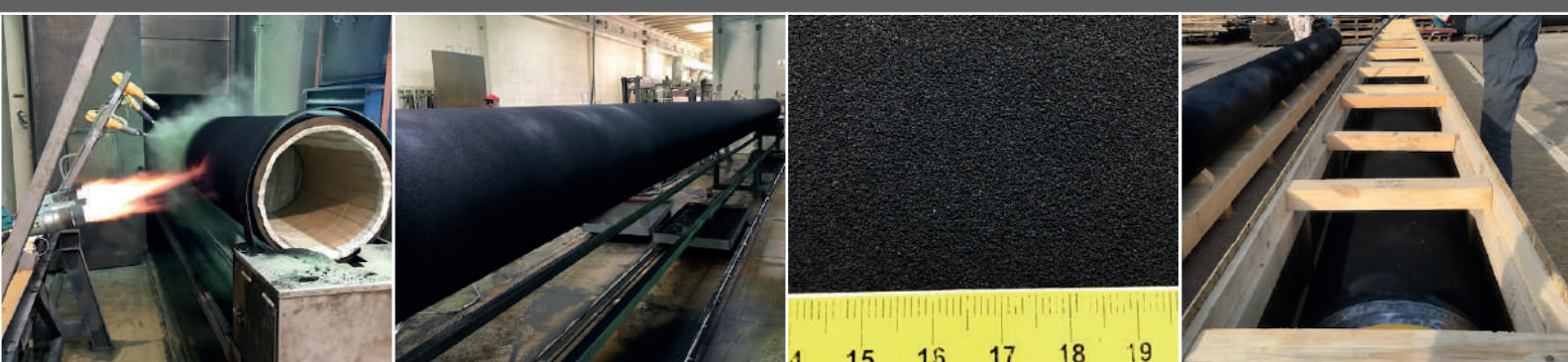
FSPE PRODUCTION PROCESS



GENERAL TESTING

These are merely approximate values adjustable according to clients' requirements.

PROPERTY	TEST DESCRIPTION	TYPICAL VALUES
Degree of cure of epoxy resin	ISO 21809/1	ΔT_g according to the manufacturer specifications
Impact	ISO 21809/1	> 7 J/mm
Cathodic Disbondment	ISO 21809/1	23°C/ 28 days or 60°C/ 2 days max 7 mm
Peel Strength	ISO 21809/1	35 N/cm at 23°C; 15 N/cm at 70°C
Continuity (Holiday detection)	ISO 21809/1	10 kV/mm; max 25kV



Address : Via del Vallo n°46
61122 - Pesaro (PU) - Italy
Phone : +39 0721 20 28 82
Fax : +39 0721 20 34 63

vip Verniciatura Industriale Pesarese
Coating Services
Solutions against time
www.vippesaro.com

E-mail : info@vippesaro.com
Cod. Fisc./Part. IVA : IT 02198710416
R.E.A. : n° 162110
Cap.Soc. : 100.000,00 i.v.